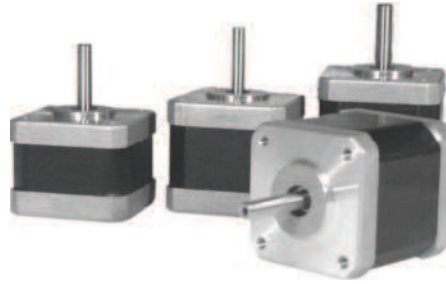


# Nema 17

2 phase 1.8° step angle  
 hybrid stepping motor



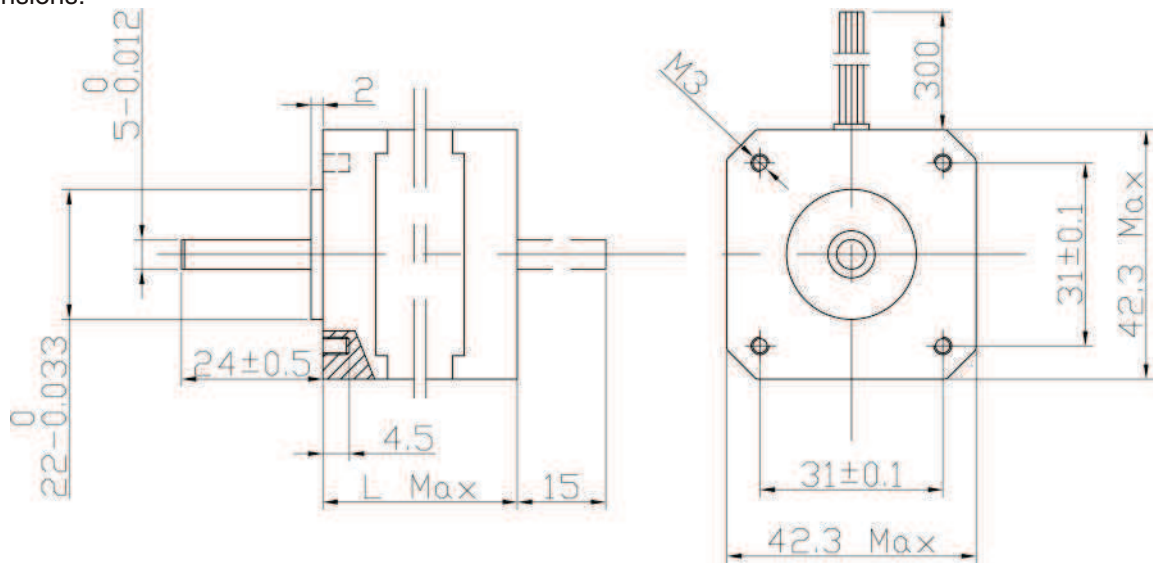
Specifications:

Model	Holding Torque (Nm)	Phase current (A)	Rotor Inertia (g/cm <sup>2</sup> )	Motor Length L max (mm)	Detent Torque (Nm)	Phase Resistance (ohm)	Phase Inductance (mH)	Lead Wire (No)	Motor Weight (Kg)	Note
<b>M1173020</b>	0.28	0.7	34	34	0.016	6.3	8.9	4	0.24	
<b>M1173021</b>	0.28	1.3	34	34	0.016	2.6	3.7	4	0.24	
<b>M1173030</b>	0.40	0.7	54	40	0.022	7.5	15.3	4	0.29	
<b>M1173031</b>	0.40	1.7	54	40	0.022	1.45	2.6	4	0.29	
<b>M1173040</b>	0.50	0.7	68	48	0.026	9.3	17.8	4	0.35	
<b>M1173041</b>	0.50	1.7	68	48	0.026	1.78	2.9	4	0.35	

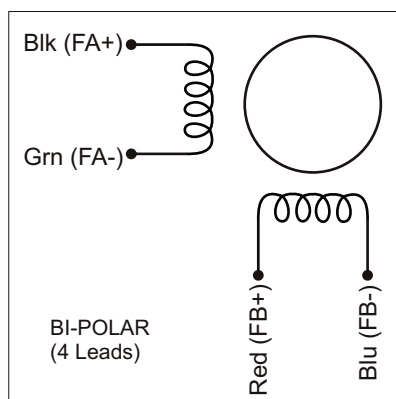
Double shaft and custom windings available

Mechanical Dimensions:

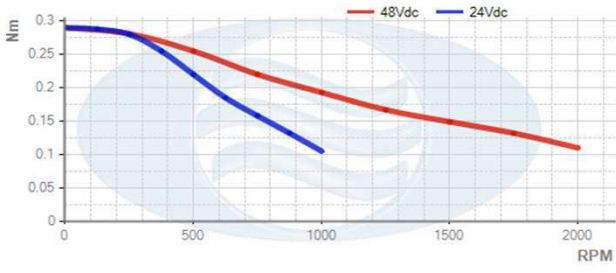
Unit: mm



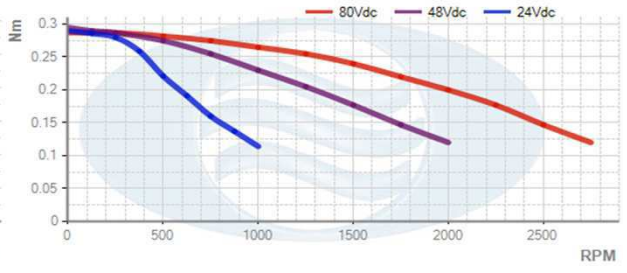
Wiring Diagram:



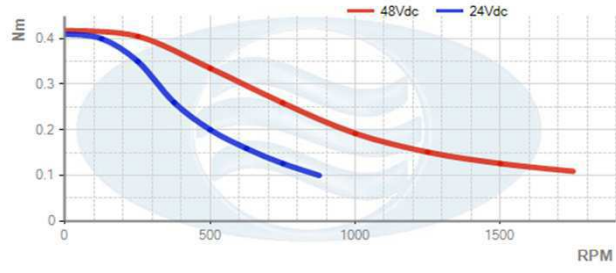
M1173020



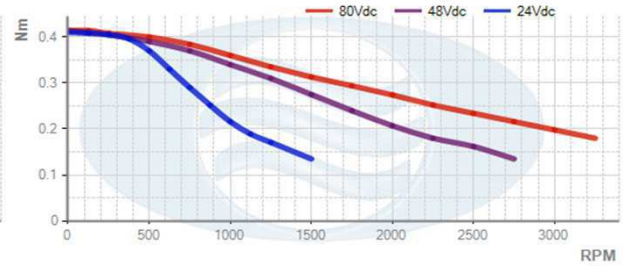
M1173021



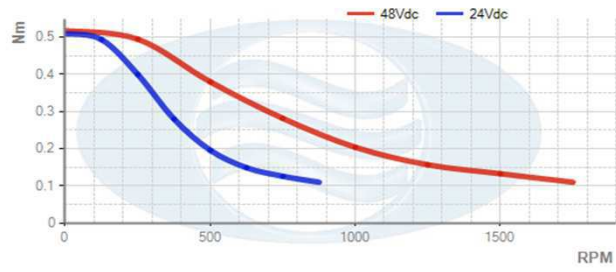
M1173030



M1173031



M1173040



M1173041

